



# SANY

## POWER FOR YOU

Quality Changes the World

# C9 SERIES

## SY140C-9i

- Operating Weight : 14000kg
- Bucket Capacity : 0.72 m<sup>3</sup> GP
- Engine Power : 100 HP(75KW)/2100 rpm



### Advance Dynamic Control



- DOMCS intelligent control
- Positive flow control
- Different working modes

### High Profitability



- Low fuel consumption
- Higher working efficiency
- Lower maintenance cost

### Remote Monitoring System



- Advance GPRS monitoring
- Remote error diagnosis
- Smart machine alerts

### Stable & Reliable



- Proven hydraulic components
- Heavy duty structure
- Robust under carriage

**SANY HEAVY INDUSTRY INDIA PVT. LTD.**

## ENGINE

Model	Cummins B3.9-100c
Type	4 cylinder in-line Water Cooled
Rated Engine Power	100HP (75 kW) / 2200 rpm
Max. Torque	364Nm/1000rpm
Batteries	2 X 12 V
Displacement	3.9 L

## CONTROL SYSTEM

Control System	DOMCS Intelligent Controller
Control Hydraulic System	Positive Flow
Working Modes	H S B
Remote Monitoring System	GPRS, GPS, GIS

## HYDRAULIC SYSTEM

Main Pumps	Variable Displacements Axial Piston Pumps
Max. Flow	2×121 lpm
Pilot Pump	1 Gear Pump
Travel Motor	2 Axial Piston Motor with Parking Brake
Swing Motor	1 Axial Piston Motor with Swing Holding Brake

## RELIEF VALVE SETTINGS

Implement Circuit	31.4 Mpa
Swing Circuit	24.5 Mpa
Travel Circuit	31.4 Mpa
Pilot Circuit	3.9 Mpa

## UNDERCARRIAGE & WORKING DEVICE

Track Shoes(each side)	44
Upper Rollers	1
Lower Rollers	7
Track Guard	2
Std. Track	500 mm
Std. Boom	4600 mm
Std. Arm	2100 mm
Std. Bucket	0.72 m <sup>3</sup> GP

## PERFORMANCE

Max. Travel Speed(High/Low)	5.5/3.5 km/h
Swing Speed	12 rpm
Gradeability	70% / 35°
Ground Pressure	41.7 kPa
Max. Tracking Force	102 kN
Bucket Digging Force	92.7 kN
Arm Digging Force	66.13 kN

## SERVICE REFILL CAPACITIES

Hydraulic Tank	150 L
Fuel Tank	240 L
Engine Oil	13.2 L
Radiator	19.2 L
Swing Device	3 L
Travel Device	2×5.5 L

## CAB

AC	NA.
Cabin Guard	Opt.

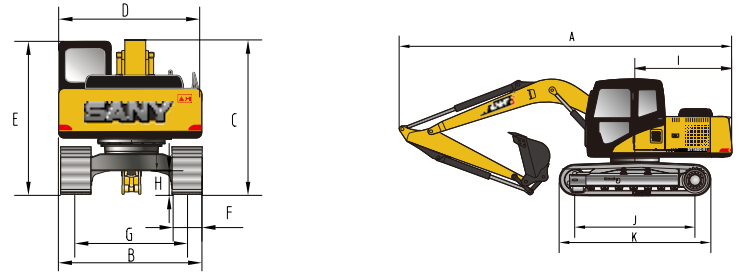
## SANY HEAVY INDUSTRY INDIA PVT. LTD.

### HEAD OFFICE

Address : Plot No. E-4, Chakan Industrial Area Phase-III,  
 Village : Kuruli, Taluka: Khed, District: Pune - 410501, Maharashtra, INDIA.  
 Tel : +91 21 35670288, Fax: +91 21 35670300  
 E-mail : sales@sany.in, Website: www.sany.in  
 Service E-mail : service@sany.in

**Service & Sales Hotline: 1800-209-3337**

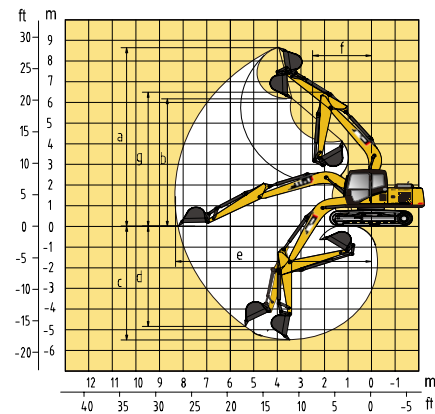
## DIMENSION (Unit: mm)



## DIMENSION (Unit: mm)

	Arm 2100	Arm 2500
A. Overall Length	7700	7700
B. Overall Width	2550	2550
C. Overall Height	2815	2810
D. Upper Width	2490	2490
E. Overall Height of Cab	2740	2740
F. Std. Track Shoe Width	500	500
G. Track Gauge	1990	1990
H. Min. Ground Clearance	425	425
I. Rear-end Swing Radius	2250	2250
J. Distance between Tumbles	2930	2930
K. Under Carriage Length	3665	3665

## WORKING RANGE (Unit: mm)



## WORKING RANGE

	Arm 2100	Arm 2500
a. Max. Cutting Height	8320	8685
b. Max. Dumping Height	5840	6180
c. Max. Digging Depth	5145	5510
d. Max. Vertical Digging Depth	4555	4890
e. Max. Digging Reach	7965	8290
f. Min. Swing Radius	2250	2500
g. Max. Height at Min. Swing Radius	6500	6500

## BUCKET

Capacity	Width (mm)	Weight (kg)	Tooth Point	Arm Length	
				2.1m	2.5m
0.72 GP-Std.	1076	584	5	●	△
0.65 HD-Opt.	990	549	5	■	●

- Suitable for materials with density of 1800 kg/m<sup>3</sup> (3030 lb/yd<sup>3</sup>) or less
- Suitable for materials with density of 1600 kg/m<sup>3</sup> (2700 lb/yd<sup>3</sup>) or less
- △ Suitable for materials with density of 1100 kg/m<sup>3</sup> (1850 lb/yd<sup>3</sup>) or less

Please Contact